

75
आज़ादी का
अमृत महोत्सव



**INVEST
MADHYA
PRADESH**

GLOBAL INVESTORS SUMMIT

www.invest.mp.gov.in



IT, ITeS, ESDM

MADHYA PRADESH THE FUTURE READY STATE



Global Scenario of the sector

▶ Global IT spending

USD **3.8 Trillion** in 2021



▶ Growth Rate

10.3 % in Global Information Technology market



▶ Ranking

Asia Pacific is the largest and **North America** is the 2nd largest region in IT market during 2021



▶ Worldwide IT spending

Projected to increase by **5.1%** from 2022



What's happening in the sector?



Consumer demand

Digital customer experience
Industry-led solutions
Real-time intelligence



Disruptive technology adoption

Cloud, IoT, RPA, AI/Cognitive,
Big Data Analytics, social platforms,
mobility, AR/VR, 5G, cyber security



New business models

"Everything-as-a-Service"
aims to put the skills and tools
necessary for tech-led innovation

Indian Scenario of the sector

India

The largest internet user base with cheapest Internet rates

Employment

Employs over 5 million as of FY 2022

GDP Share of IT and ITes:

7.4 % in FY 2022

Exports

Software Services rose by 17.2% to USD 156.7 Billion in FY 21-22 Electronic goods stood at USD 12.4 Billion in FY 21-22

FDI Share

IT sector ranks 2nd in India's total FDI share

Semiconductor Market

Expected to increase from ~USD 15 Bn in FY 20 to ~USD 110 Bn in FY 30, growing at a CAGR of 22%



Madhya Pradesh Business Enabling Factors

● Strategic Location ●

Centrally located / good for warehouse hubs / well connected by Rail/ Road / Air

➤ Good Governance

- Transparent, Ease, Stable & WISE (wired/Integrated/Sustainable & Efficient) Governance

➤ Good institutional presence

- Presence of several premier institutes like IIT, IIM, IISER, IITMs
- 14 Institutes in the top 100 ranking of NIRF 2022 across various genres are present in the state
- Students from such institutes get placed in multinational companies
- Educated and skilled talent pool available at a low-cost

➤ Vibrant industrial ecosystem

- Emerging start-up hub with multiple incubation centres.
- Presence of **consumer industries** like Automobile, Engineering, Pharma, Food and others for electronic products
- Good IT ecosystem with with **3 private and 1 government** owned IT SEZs viz. TCS, Infosys, Impetus and Crystal IT Park
- **Cheaper land rates and low cost of operation** compared to other major cities
- The state is under **Low-Risk Seismic Zone**

➤ Power Surplus State

- Power surplus state with 24*7 uninterrupted power supply at competitive rates



Madhya Pradesh Ease of Living

▶ Indore and Bhopal are amongst the top 10 **most liveable cities** in India

▶ **Peaceful State** with absence of social unrest

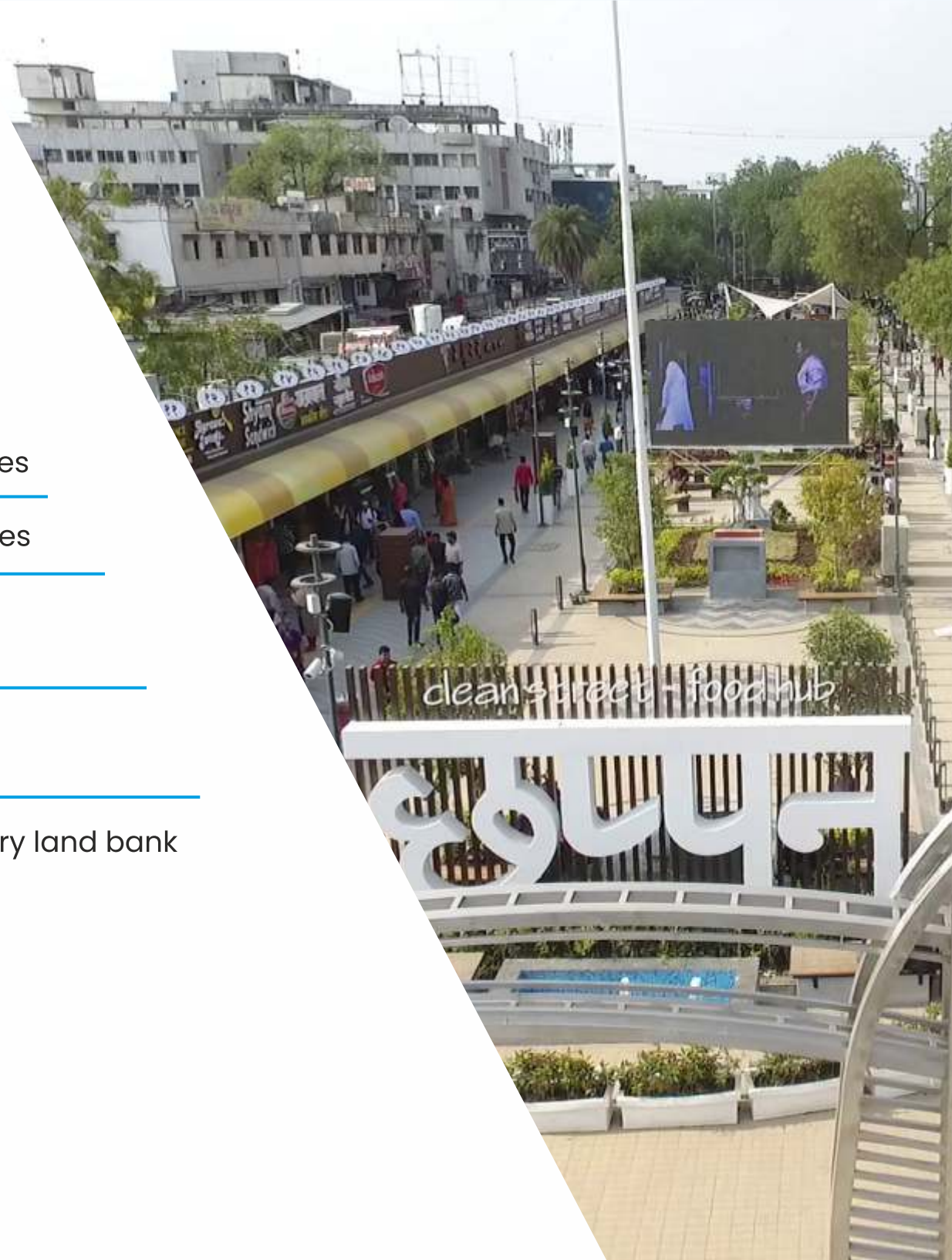
▶ **Lower Cost of Living** vis-a-vis large/metro cities

▶ **Adequate Healthcare and Educational** facilities

▶ **Vibrant ecosystem** with **work-life balance** with lesser Commute Time

▶ **Major Tourist destinations** are present in Madhya Pradesh

▶ **Well-established road connectivity** from every land bank to Airport and other transportation services



Madhya Pradesh Start-up ecosystem



- ▶ MP has **2500+ DPIIT** registered start-ups,
44% start-ups led by women
280+ IT-Service based start-ups



- ▶ **MP Tech Start-Up Policy 2022** applicable,
to nurture and promote start-up culture



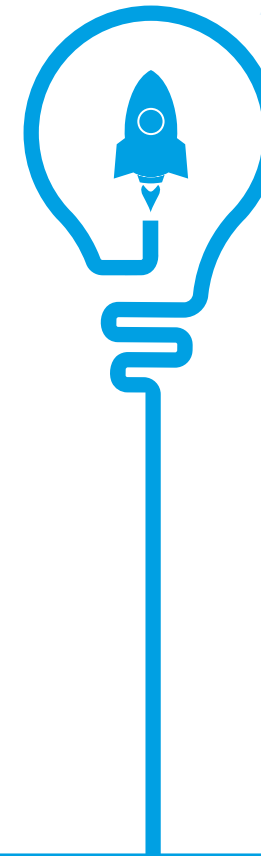
- ▶ MP has set up a **Venture Capital Fund** to
ensure access to **capital** for Start-ups



- ▶ 6 Smart City incubators including Indore,
Bhopal, Jabalpur, Gwalior, Satna, Sagar



**The State is ranked amongst the top States in
Emerging Start-Up Ecosystem Ranking 2019**

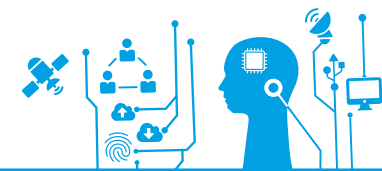


**Start-Ups
170+**

**Investors
25+**

**Mentors
30+**

**Incubators
Supported
30+**





Madhya Pradesh IT/EMC Parks Landscape

BHOPAL

- IT Park, Badwai
- EMC, Badwai

Institutes: MANIT, NID, NLUI, NIFT, AIIMS, IISER, SPA, IIHM, IIIT and STPI incubation centre

GWALIOR

- IT Park, Near IIITM
- IT Park, Malanpur

Institutes: IIITM, MITS and STPI incubation center

INDORE

- IT Park, Kanadiya
- Crystal IT Park (I&I)
- IT Park, Sinhasa
- IT Park, Pardesipura
- IT Park, Betma
- IT Park, Dhankhedi
- Atulya IT Park

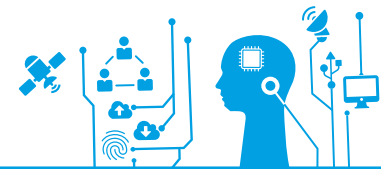
Institutes: IIT, IIM and GSITS and STPI incubation centre

JABALPUR

- EMC
- IT Park

Institutes: Jabalpur Engineering College and IIITDM

Land Area of more than 600 Acre
Built-up area more than 6 lakh Sq. ft.



Madhya Pradesh IT Parks Landscape

BHOPAL



Opportunities

- ▶ IT Park, Badwai, Bhopal
 - Available land pool – 15 acres
 - Proposed built-up space area- 1 Lakh sq.ft. adjoining existing building
 - Proposed Plug and Play area for ESDM Startup- 40 thousand sq.ft.

Presence of IT players such as Sutherland, DoIT, Artech, Technotask, NetLink, Firstsource, eHerex, HLBS, X-trant, Surevin, Sagacity, Aegis, Cyber Futuristics etc.

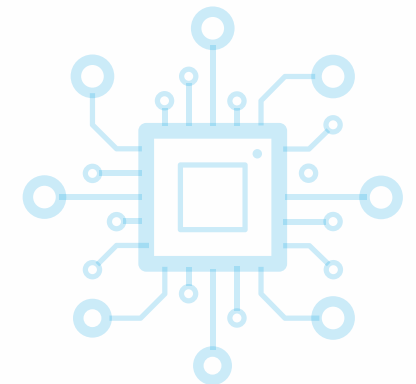
INDORE



Opportunities

- ▶ IT Park, Kanadia: Available land pool- 14 acres
- ▶ Crystal IT Park(I & II): Built-up- 5,59,400 sq.ft.
- ▶ IT Park Sinhansa: 80,000 Sq. ft. newly built-up space
- ▶ Data Center IT Park Betma: Available land pool area- 50 acres
- ▶ IT Park Dhankhedi: Available land pool area- 37 acres
- ▶ Atulya IT Park: Built up area- 1,28,000 sq.ft.

Presence of IT players such as Infosys, TCS, Persistent, WNS, Task-us, DXC, Teleperformance and Taurus BPO, Accenture, Civica, WM Logistics, Infobeans, Impetus, Yash Technologies and Rakuten



Madhya Pradesh IT Parks Landscape

GWALIOR



Opportunities

- ▶ IT Park, Near IIITM: Available land pool- 75 acres
- ▶ IT Park, Ganga Malanpur: Available land pool- 35 acres
- ▶ IT & ESDM Industry: Built-up Space – 50,000 Sq.ft.

STPI incubation Centre
Close proximity to
national capital Delhi

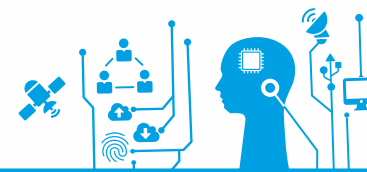
JABALPUR



Opportunities

- ▶ IT Park, Gadheri:
 - Available land pool- 19 acres
 - Built-up Space– 1 Lakh Sq.ft.
- ▶ IT Park, Purva:
 - Available land pool- 60 acres proposed

Presence of major companies
in the Defence sector PSUs
STPI incubation Centre





Madhya Pradesh Electronic Manufacturing Clusters Landscape

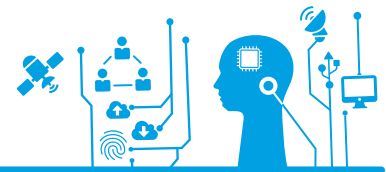
EMC Badwai - Bhopal

1	EMC Area	50 Acres
2	Proposed Investments in the EMC	Rs. 260 Cores
3	Proposed Employment	Direct 3000
4	Target ESDM Vertical	Telecom & IT Hardware

EMC Purva- Jabalpur

1	EMC Area	40 Acres
2	Proposed Investments in the EMC	Rs. 110 Cores
3	Proposed Employment	Direct 1365
4	Target ESDM Vertical	Solar Industrial Electronics, Defence and Aerospace

Common facility and Ready to move-in factory sheds



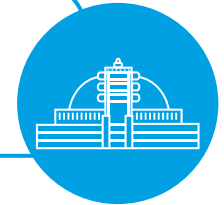
Madhya Pradesh

The Indore Story

- ▶ **Financial capital of MP:** Hosting the maximum number of tech industries and startups in the state



- ▶ Indore is gearing up to be a **Smart Metro City**



- ▶ The 4 IT SEZs of Indore recorded IT exports worth **INR 1,761 crores** in FY 2021-22, growth of **51.64%** from last FY



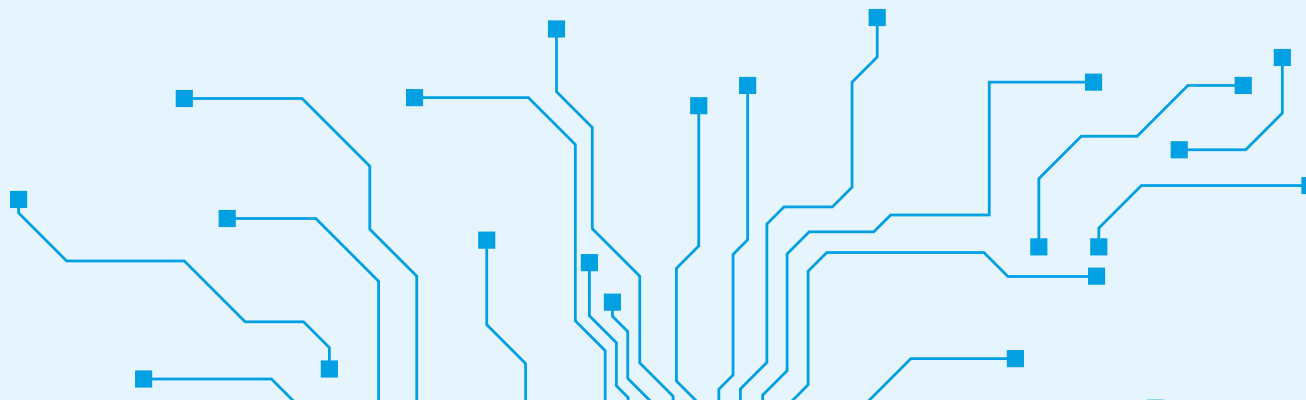
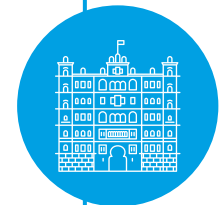
- ▶ A city with top-class educational ecosystem like **RRCAT, IIT and IIM** with more than 1 lakh IT professionals



- ▶ **The Super Corridor:** 12 Km long corridor from airport to Vijay Nagar comprising of various commercial and residential projects
Indore-Pithampur Economic Corridor: 20 Km long corridor, having 500 acres of commercial land along side



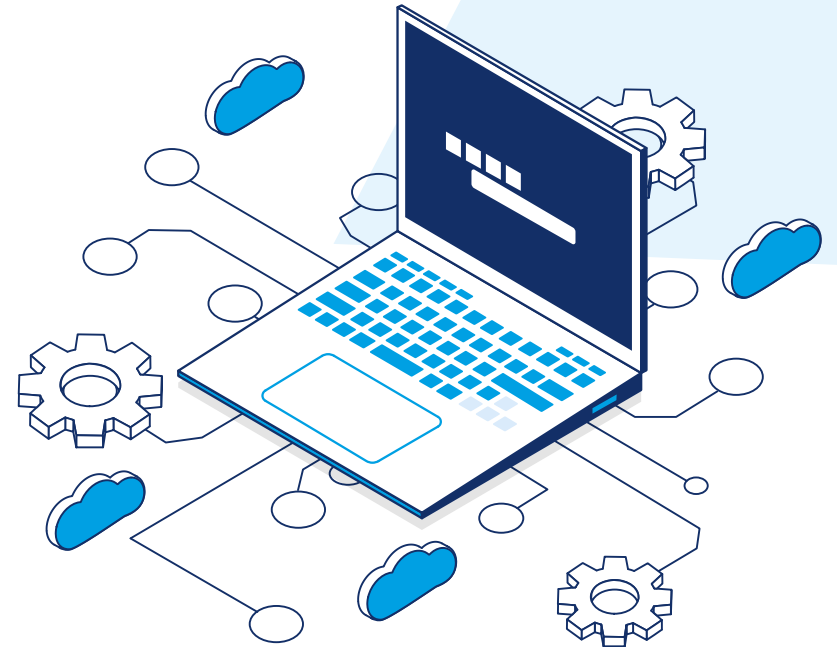
- ▶ Boasting a rich history and rapid industrialization, Indore is famously known for its magnificent **palaces and temples, street food, night markets** etc.



Madhya Pradesh

New initiatives and opportunities

- ▶ **Plug-and-play** infrastructure at IT Parks
- ▶ **Drone manufacturing** and training hub- Gwalior hosts MP's first Drone school
- ▶ Focus on up-skilling with attractive incentives
- ▶ Introduction of **new IT and ESDM Parks** in Indore region
- ▶ **Common facilities** such as testing, R& D centers, Incubation centers, Start-up centers
- ▶ Setting up of **IT / Cloud** labs in collaboration with CISCO / ORACLE / IBM and many more
- ▶ Setting up of finishing schools for making resources employable



Policy Initiatives for IT, ITeS and Electronics Industry

- There is the provision for subleasing
- Uses up to 40% of land parcel for commercial activities (85:15 & 60:40) for IT Investment Area (ITTA)
- Single window clearance system
- FAR 2.5 or as per development plan

➤ CAPEX

- Subsidy on interest
- Capital Investment Subsidy for IT/ITES & ESDM
- Stamp Duty & Registration fees reimbursement

➤ OPEX

- Patent Assistance up to 50% for both national & international patents
- Assistance up to 50% for both national & international events
- Special package of incentive for BPO/BPM Units



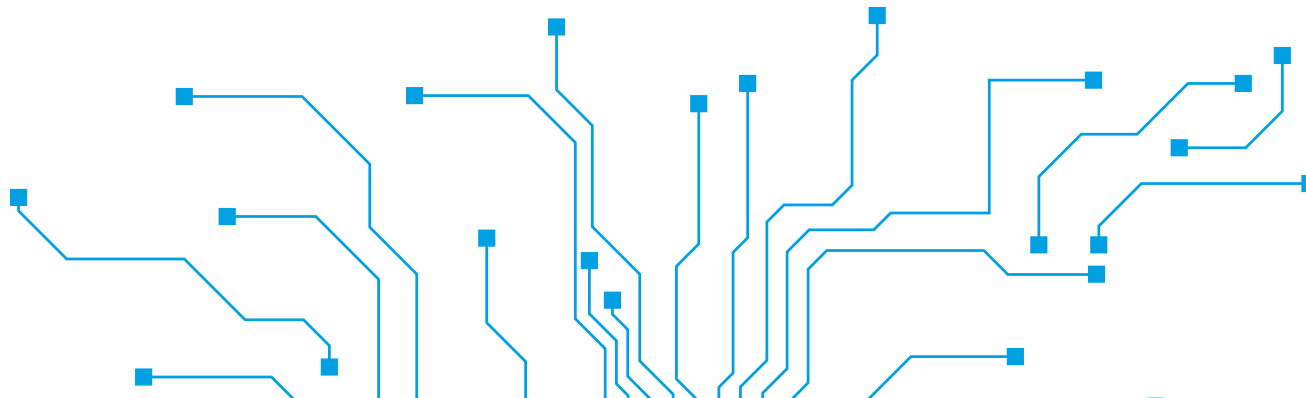
Key Achievements

360 acre of land allotted to 220 IT/ITES/ESDM Companies at IT Park Badwai Bhopal, Sinhansa Indore & Purva Jabalpur

~3.5 Lakh sq. ft. built-up space allotted to more than 60 IT/ITES/ESDM companies on rent at different IT Parks in the State

2 Plug and Play IT Parks upcoming in Indore with built-up area of **~13 Lakh sq. ft.**

Additional **2 lakh sq. ft. built-up area** is being proposed for creating new IT Parks across the state



Key Players

Infosys®

impetus™

netlink

TATA
TATA CONSULTANCY SERVICES

mapps
Engineering & Innovation

AEGIS+

GREENSURFER
Save Energy Save Earth

Mphasis
an HP company

InfoBeans
CREATING WOW!

CIVICA

ignatiuz
Compelling IT Solutions

TECHNOTASK

XtraNet
DEFINING NEW IT SAGA

NewTech
FUSION
Innovation with creativity

Tele
performance
SOLUTIONS

Soluzione
Business solutions for your business

SAFFRON
SOLAR

sagacity
infotech pvt. ltd.

CYBER
FUTURISTICS
TURNING FUTURE MOVING AHEAD

paytm

VRD
NETWORK
Optimized E-Business Solutions

WNS
Extending Your Enterprise

AVTEC

Trumen®
sensing matters

ruralShores
Countryside Nationwide

HLBS
Technologies for Tomorrow

Net Legends

we win

appalto
Growth With Technology

WM
WASTE MANAGEMENT
Logistics™

SUTHERLAND

MPonline
Limited

concile®
TECHSYSTEMS

SpectraLogics

ARTECH
INTELLIGENCE IS HUMAN

TaskUs

DXC
TECHNOLOGY

TAURUS BPO

Persistent

YASH
Technologies
More than what you think.

Rakuten

accenture

Contact Us

Science and Technology Department

**Principal Secretary Department of
Science and Technology**

F-503, Vallabh Bhawan-3,
Mantralaya, Bhopal (M.P.)
Phone: +91 755-2708852
Mail: psit@mp.gov.in

**Managing Director Madhya Pradesh State
Electronics Development Corporation Limited**

47 A- Area Hills Bhopal, M.P.
Phone: +91 755-2518300, 2518500
Mail: md@mpsdc.com

Industry Department

**Principal Secretary, Department of Industrial
Policy and Investment Promotion**

D-204, Vallabh Bhawan-3,
Mantralaya, Bhopal (M.P.)
Phone: +91-755-2708661
Mail: pscomnind@mp.gov.in

**Managing Director, MP Industrial
Development Corporation Ltd. (MPIDC)**

21, Arera Hills Bhopal, M.P.
Phone: +91-755-2575618, 2571830
Mail: md@mpidc.co.in

ORGANISED BY



NATIONAL PARTNER



KNOWLEDGE PARTNER



FOR DETAILS, LOG ON TO:

invest.mp.gov.in